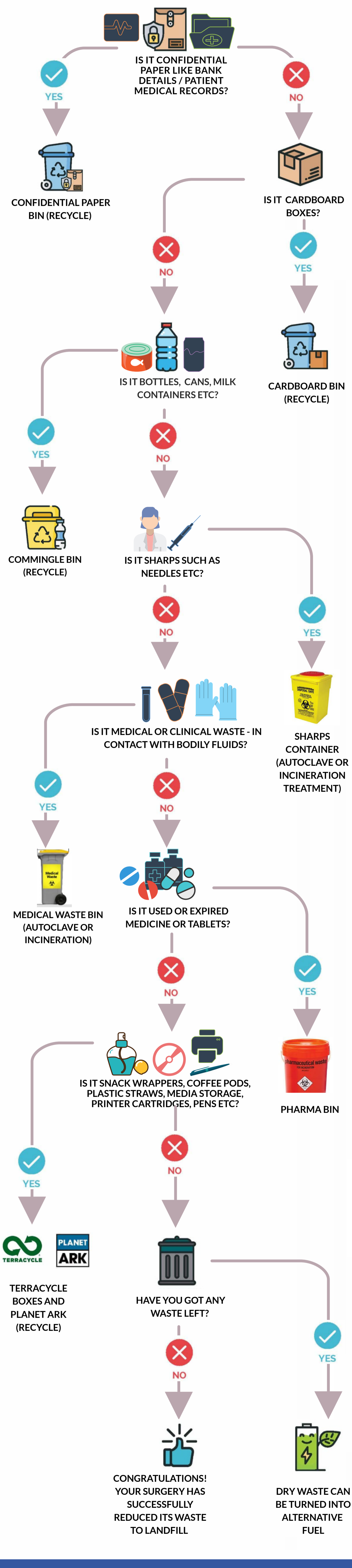




# MEDICAL PRACTISE RECYCLING FLOW CHART

When you operate a medical practise - or any other similar type of business, really - one thing you should prioritise is recycling. You should not only focus on providing your patients and customers with the best service possible but also the environment. When you put some focus on recycling - you can also really minimise your waste management costs. The following simple flow chart could be printed out and placed on a wall - so your employees and team know exactly what can be recycled. BE AS GOOD TO THE ENVIRONMENT - AS YOU ARE TO YOUR PATIENTS!



Smart recycling processes will mean that you have virtually zero general waste (that is not diverted from landfill). the tiny amount of waste remaining can be turned into alternative fuels.

Infographic provided by



www.waster.com.au